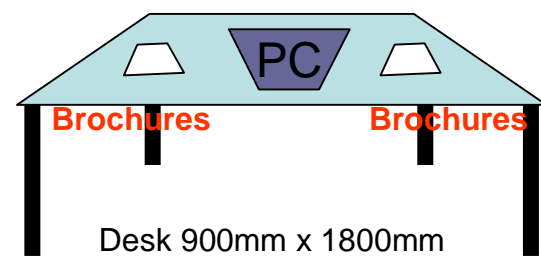
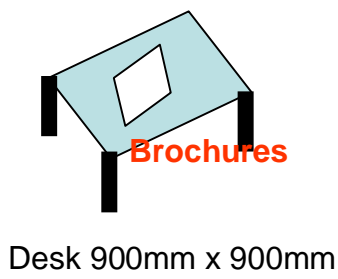
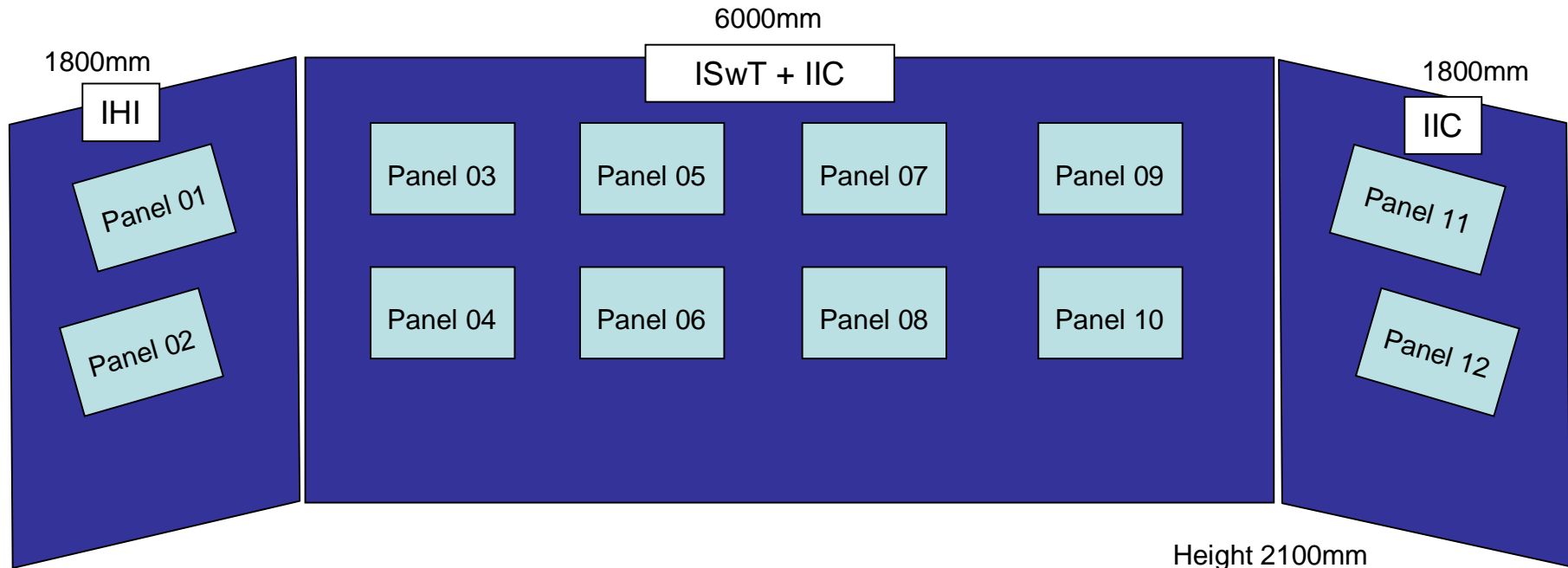


Plan of ISwT/IIC/IHI Exhibition Booth at 7th NDE Int'l Conference May 2009

Company name plate (will be ready separately)

- * IHI Southwest Technologies Inc.
- * IHI Inspection & Instrumentation Co., Ltd.
- * IHI Cooperation

Rev.0 Koji
Rev.1 John
Rev.2
Rev.3
Rev.4



One more desk here

4 Chairs

Panel size = A-1 or 600x900 mm

Panel 01

IHI


IHI Corporation

Explore the Engineering Edge

<http://www.ihi.co.jp/index-e.html>

Panel 02

Products

 Space Development	 Jet Engines	 Energy Systems	 Storage Systems & Process Plants	 Environmental Preservation & Disaster Prevention
 Materials Handling Equipment	 Physical Distribution Systems	 Bridges & Steel Structures	 Construction Machinery	 Industrial Machinery
 Standard Machinery	 Facilities & Products for Civil Use	 Traffic Systems & Parking Systems	 Security Related Technology	 Ships & Offshore Facilities

Panel 03



IHI Southwest Technologies, Inc
providing

Global  **Solutions**

Panel 04



Organization and Campus

ISwT is an IHI company that combines our past experience at Southwest Research Institute (SwRI) with the strength and expertise of IHI in areas such as robotics and controls providing NDE services across the nuclear industry



Panel 05



Guided Wave UT using MsS

New Advances in Sensor Technology (MsT)

Better Signal to Noise Ratio (SNR)

Developing Phased Array for Beam Steering

Permanent Monitoring and Buried Applications



Panel 06



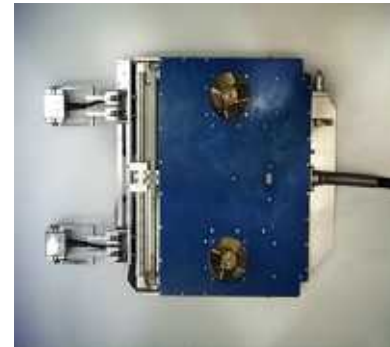
Core Shroud UT w/AIRIS CS

Tooling Based on Proven Technology - AIRIS 21

Includes Two Phased Array Search Units

Recent Project Performed at BWR2 (Oyster Creek)

Ten (10) Vertical Seams Examined



Panel 07



Advanced Nozzle Tool - ANT

**Swimmable Tool for PWR
ID Nozzle Examinations**

**Phased Array UT and
Eddy Current Equipped**

**Recent Successes in
Korea and USA**

**Option for MRP-139
Requirements**



Panel 08



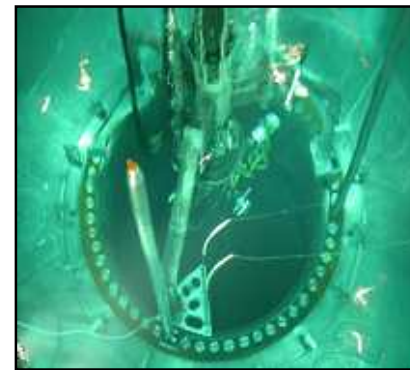
PWR RPV – FastPaR II

**Completely Phased Array
Equipped - DynaRay**


**Less Lay-down Space
Than Some Tools**

**Single Tool and 1 Team =
Less Cost**

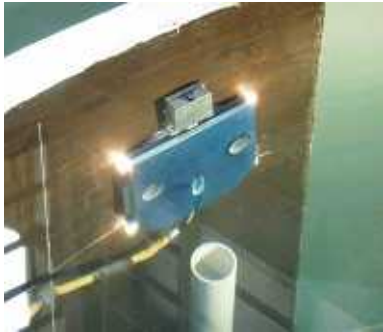
**Dependable Tool with
Short Repair Times**



Panel 09



RPV ISI ID Tool AIRIS 21



Features

- ◆ Trackless Underwater System
- ◆ Compact Body (550*640*55)
Easy Handling & Control
- ◆ New Positioning System
Swim & Drive Freely
- ◆ Increasing the Inspection Coverage
- ◆ Reducing the Operational Period & Personnel Radiation Exposure

Panel 10



BWR ISI OD Tool Magnetic Crawler Nozzle-Shell Device



Features

- ◆ Trackless (Magnetic) System
- ◆ High Positioning Accuracy
- ◆ Light weight and Small size

Dimension & Weight

- ◆ 850H x 360W x 360L in mm
- ◆ 16 Kg

Positioning Accuracy

- ◆ +/- 2.5 mm

Panel 11



株式会社 IHI 検査計測
IHI Inspection & Instrumentation Co., Ltd.

The Intelligent & Integrated Inspection Company
正確な検査・計測サービスの提供により 安全な社会の建設・維持に貢献します

<http://www.iic-hq.co.jp/english/index.html>

Panel 12

